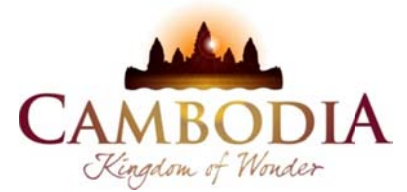




KINGDOM OF CAMBODIA
NATION RELIGION KING



TOURISM STATISTICS REPORT

2013

MINISTRY OF TOURISM

Statistics and Tourism Information Department

No. A3, Street 169, Sangkat Veal Vong, Khan 7 Makara, Phnom Penh, Cambodia.

Fax: +855 23 885003

E-mail: kong@mot.gov.kh

Web site: www.mot.gov.kh

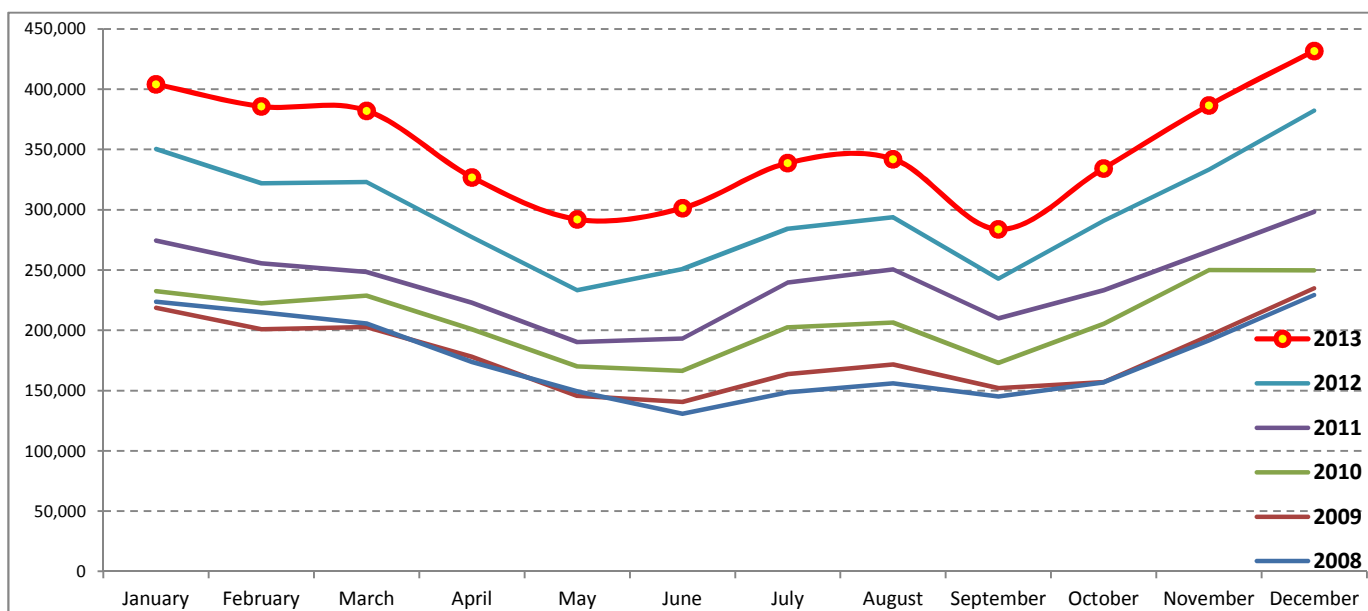
Tourism Highlights

International Tourist Arrivals, Average Length of Stay, Hotels Occupancy & Tourism Receipts 1993 - 2013

Years	Int'l Tourist Arrivals		Average Length of Stay (Days)	Hotels Occupancy (%)	Tourism Receipts (Million US\$)
	Number	Change (%)			
1993	118,183	-	N/A	N/A	N/A
1994	176,617	49.4	N/A	N/A	N/A
1995	219,680	24.4	8.00	37.00	100
1996	260,489	18.6	7.50	40.00	118
1997	218,843	-16.0	6.40	30.00	103
1998	286,524	30.9	5.20	40.00	166
1999	367,743	28.3	5.50	44.00	190
2000	466,365	26.8	5.50	45.00	228
2001	604,919	29.7	5.50	48.00	304
2002	786,524	30.0	5.80	50.00	379
2003	701,014	-10.9	5.50	50.00	347
2004	1,055,202	50.5	6.30	52.00	578
2005	1,421,615	34.7	6.30	52.00	832
2006	1,700,041	19.6	6.50	54.79	1,049
2007	2,015,128	18.5	6.50	54.79	1,400
2008	2,125,465	5.5	6.65	62.68	1,595
2009	2,161,577	1.7	6.45	63.57	1,561
2010	2,508,289	16.0	6.45	65.74	1,786
2011	2,881,862	14.9	6.50	66.15	1,912
2012	3,584,307	24.4	6.30	68.49	2,210
2013	4,210,165	17.5	6.75	69.53	2,547

International tourist arrivals to Cambodia

Destination	Months	2008	2009	2010	2011	2012	2013	change (%) 2013*/12
Cambodia	Q1	644,205	622,288	683,692	778,467	995,210	1,172,072	17.8
<i>International tourist arrivals by all means of transportations</i>	January	223,581	218,691	232,590	274,471	350,257	404,106	15.4
	February	214,902	200,789	222,354	255,499	321,870	385,760	19.8
	March	205,722	202,808	228,748	248,497	323,083	382,206	18.3
	Q2	454,031	464,230	537,464	606,562	761,442	920,527	20.9
	April	173,903	177,955	200,965	223,032	277,304	327,000	17.9
	May	149,275	145,564	170,164	190,258	233,220	292,115	25.3
	June	130,853	140,711	166,335	193,272	250,918	301,412	20.1
	Q3	449,693	487,422	582,024	699,760	820,888	964,612	17.5
	July	148,449	163,817	202,349	239,527	284,282	338,761	19.2
	August	156,098	171,668	206,563	250,429	293,859	342,064	16.4
	September	145,146	151,937	173,112	209,804	242,747	283,787	16.9
	Q4	577,536	587,637	705,109	797,073	1,006,767	1,152,954	14.5
	October	156,718	157,105	205,515	233,190	290,959	334,410	14.9
	November	191,549	195,570	249,892	265,539	333,482	386,737	16.0
	December	229,269	234,962	249,702	298,344	382,326	431,807	12.9
	Total	2,125,465	2,161,577	2,508,289	2,881,862	3,584,307	4,210,165	17.5



Source: Statistics and ICT Department, MOT

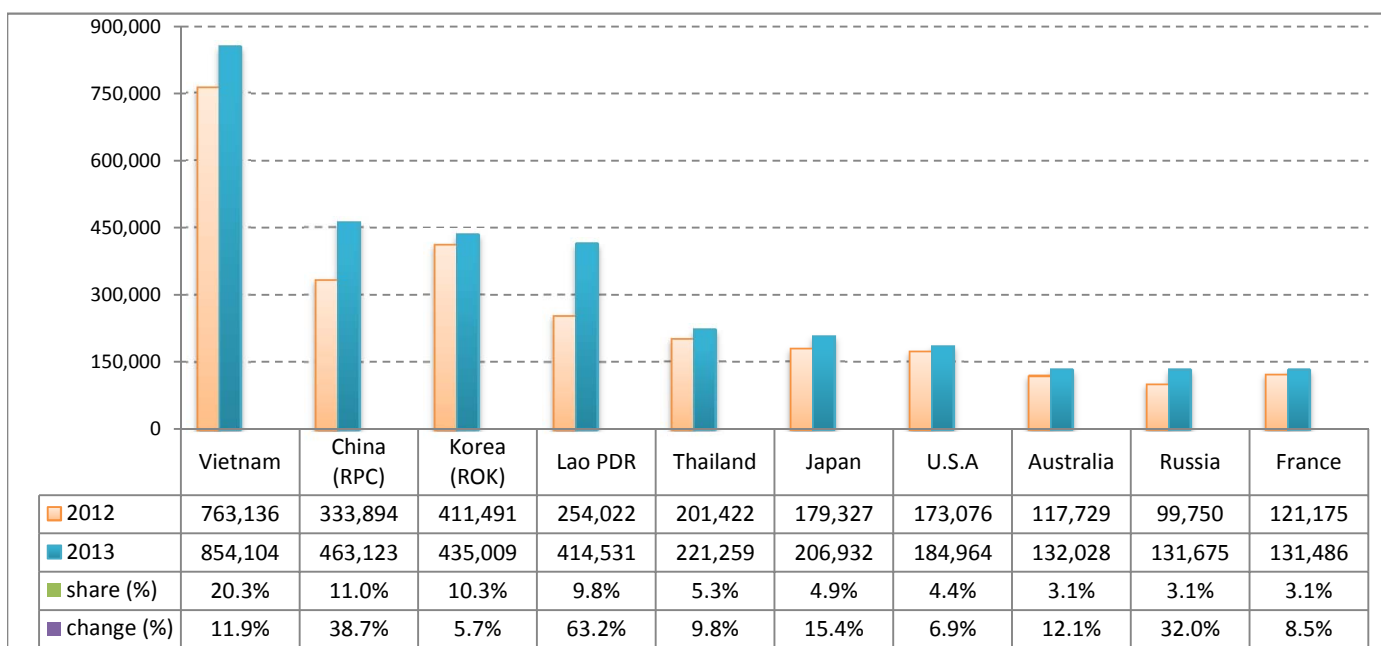
Executive Summary Report in 2013

I. International tourist arrivals to Cambodia in January - December 2013 was: **4,210,165**

II. Mode of arrivals

	arrivals	share (%)
Air	2,017,658	47.9
Phnom Penh Int'l Airport	836,377	19.9
Siem Reap Int'l Airport	1,181,281	28.1
Land and Water ways	2,192,507	52.1
Land	2,117,454	50.3
Waterway	75,053	1.8
Total	4,210,165	100.0

III. Top ten markets arrivals in January - December 2013



IV. International tourist arrivals to Cambodia in January - December 2013

	Inbound tourism		share (%)		change (%)
	2012	2013	2012	2013	2013*/12
Air	1,722,083	2,017,658	48.0	47.9	17.2
Phnom Penh Int'l Airport	716,584	836,377	20.0	19.9	16.7
Siem Reap Int'l Airport	1,005,499	1,181,281	28.1	28.1	17.5
Land and Water ways	1,862,224	2,192,507	52.0	52.1	17.7
Land	1,785,726	2,117,454	49.8	50.3	18.6
Waterway	76,498	75,053	2.1	1.8	-1.9
Total	3,584,307	4,210,165	100.0	100.0	17.5

V. Remark: Percentage share of international tourist arrivals at destinations in January - December 2013

	Arrivals		share (%)		change (%)
	2012	2013	2012	2013	2013*/12
Phnom Penh & Other Destinations	1,520,971	1,972,879	42.4	46.9	29.7
Siem Reap Province	2,063,336	2,237,286	57.6	53.1	8.4
Total	3,584,307	4,210,165	100.0	100.0	17.5

VI. Outbound tourism in January - December 2013

	Outbound tourism		change (%)
	2012	2013	2013*/12
Cambodian outbound tourists	792,398	871,646	10.0
International outbound tourists	3,504,584	4,173,597	19.1

International Tourist Arrivals to Cambodia by Country of Residence in January - December 2013

(by all mean of transportations)

Regions Country of Residence	2012		2013			share		change	
			Purpose of Visit			Total	Female	2013*	2013*/12
			Holiday	Business	Other				
GRAND TOTAL	3,584,307	3,991,899	185,584	32,682	4,210,165	1,981,795	100.0	17.5	
Asia and the Pacific	2,712,316	3,064,021	148,913	18,958	3,231,892	1,552,416	76.8	19.2	
ASEAN (South-East Asia)	1,514,267	1,782,194	40,331	8,982	1,831,507	907,875	43.5	21.0	
Brunei Darussalam	964	751	14	49	814	349	0.0	-15.6	
Indonesia	22,544	23,921	4,030	248	28,199	8,627	0.7	25.1	
Lao PDR	254,022	413,957	126	448	414,531	267,766	9.8	63.2	
Malaysia	116,764	122,365	8,115	224	130,704	46,707	3.1	11.9	
Myanmar	4,744	4,241	567	281	5,089	2,067	0.1	7.3	
Philippines	97,487	111,358	6,887	754	118,999	70,533	2.8	22.1	
Singapore	53,184	54,963	2,665	180	57,808	20,905	1.4	8.7	
Thailand	201,422	207,346	9,742	4,171	221,259	94,442	5.3	9.8	
Vietnam	763,136	843,292	8,185	2,627	854,104	396,479	20.3	11.9	
North-East Asia	1,026,152	1,107,570	96,630	6,804	1,211,004	566,132	28.8	18.0	
China (RPC)	333,894	404,245	55,975	2,903	463,123	221,249	11.0	38.7	
Hong Kong SAR	8,282	8,366	198	12	8,576	4,398	0.2	3.5	
Japan	179,327	193,141	11,784	2,007	206,932	87,717	4.9	15.4	
Korea (ROK)	411,491	416,632	16,656	1,721	435,009	211,555	10.3	5.7	
Mongolia	347	322	27	23	372	173	0.0	7.2	
Taiwan, China	92,811	84,864	11,990	138	96,992	41,040	2.3	4.5	
Southern Asia	24,704	24,763	4,145	1,002	29,910	7,978	0.7	21.1	
Afghanistan	154	242	3	28	273	23	0.0	77.3	
Bangladesh	1,367	1,243	228	140	1,611	199	0.0	17.8	
Bhutan	134	65	13	23	101	34	0.0	-24.6	
India	18,999	20,267	2,823	520	23,610	6,782	0.6	24.3	
Nepal	1,478	1,074	264	137	1,475	353	0.0	-0.2	
Pakistan	1,168	689	413	78	1,180	183	0.0	1.0	
Sri Lanka	1,404	1,183	401	76	1,660	404	0.0	18.2	
Western Asia	2,420	2,843	256	26	3,125	1,700	0.1	29.1	
Kazakhstan	1,842	2,286	207	18	2,511	1,340	0.1	36.3	
Uzbekistan	578	557	49	8	614	360	0.0	6.2	
Oceania	136,879	143,601	7,215	1,896	152,712	67,150	3.6	11.6	
Australia	117,729	124,246	6,111	1,671	132,028	58,345	3.1	12.1	
Fiji	106	82	15	10	107	38	0.0	0.9	
New Zealand	19,044	19,273	1,089	215	20,577	8,767	0.5	8.0	
Other Asia & the Pacific	7,894	3,050	336	248	3,634	1,581	0.1	-54.0	
Europe	611,359	666,922	23,523	7,712	698,157	307,271	16.6	14.2	
Northern Europe	160,447	169,064	7,206	1,793	178,063	70,957	4.2	11.0	
Denmark	10,013	10,039	318	128	10,485	4,281	0.2	4.7	
Finland	6,343	6,375	246	110	6,731	2,506	0.2	6.1	
Iceland	578	725	49	14	788	322	0.0	36.3	
Ireland	8,865	9,764	386	95	10,245	4,362	0.2	15.6	
Norway	8,251	9,086	288	108	9,482	3,869	0.2	14.9	
Sweden	16,215	15,663	525	225	16,413	6,255	0.4	1.2	
United Kingdom	110,182	117,412	5,394	1,113	123,919	49,362	2.9	12.5	
Western Europe	259,499	270,793	11,954	4,687	287,434	120,727	6.8	10.8	
Austria	8,148	8,782	211	98	9,091	3,739	0.2	11.6	
Belgium	14,762	15,188	732	251	16,171	6,491	0.4	9.5	
France	121,175	121,318	7,390	2,778	131,486	56,156	3.1	8.5	
Germany	72,537	78,641	2,013	911	81,565	33,929	1.9	12.4	
Luxembourg	474	551	14	6	571	239	0.0	20.5	
Monaco	55	96	6	1	103	55	0.0	87.3	
Netherlands	24,559	26,777	936	363	28,076	11,662	0.7	14.3	
Switzerland	17,789	19,440	652	279	20,371	8,456	0.5	14.5	
Central / Eastern Europe	127,171	162,735	2,240	477	165,452	87,267	3.9	30.1	
Bulgaria	696	929	16	16	961	475	0.0	38.1	
Czech Republic	4,064	4,672	121	52	4,845	2,018	0.1	19.2	
Estonia	1,022	1,299	40	27	1,366	557	0.0	33.7	
Hungary	2,537	2,886	36	25	2,947	1,291	0.1	16.2	
Lithuania	1,089	1,594	12	2	1,608	778	0.0	47.7	
Poland	9,994	12,357	89	61	12,507	6,235	0.3	25.1	
Romania	1,327	1,444	71	11	1,526	778	0.0	15.0	
Russian Federation	99,750	129,825	1,627	223	131,675	71,204	3.1	32.0	
Slovakia	1,693	1,960	98	40	2,098	860	0.0	23.9	
Ukraine	4,999	5,769	130	20	5,919	3,071	0.1	18.4	

International Tourist Arrivals to Cambodia by Country of Residence in January - December 2013

(by all mean of transportations)

Regions Country of Residence	2012		2013			share		change	
			Purpose of Visit			Total	Female	(%)	(%)
			Holiday	Business	Other			2013*	2013*/12
GRAND TOTAL	3,584,307	3,991,899	185,584	32,682	4,210,165	1,981,795	100.0	17.5	
Southern Europe	57,571	61,617	1,894	582	64,093	26,977	1.5	11.3	
Croatia	705	762	26	10	798	363	0.0	13.2	
Greece	1,073	1,085	39	11	1,135	394	0.0	5.8	
Italy	22,625	24,141	787	268	25,196	9,725	0.6	11.4	
Portugal	3,061	3,926	139	22	4,087	1,950	0.1	33.5	
Serbia	411	563	36	14	613	325	0.0	49.1	
Slovenia	939	1,152	61	8	1,221	514	0.0	30.0	
Spain	25,349	25,737	442	193	26,372	12,146	0.6	4.0	
Turkey	3,408	4,251	364	56	4,671	1,560	0.1	37.1	
Other Europe	6,671	2,713	229	173	3,115	1,343	0.1	-53.3	
Americas	244,291	245,446	12,183	5,546	263,175	116,157	6.3	7.7	
Argentina	4,500	5,671	40	52	5,763	2,861	0.1	28.1	
Brazil	5,110	6,722	62	76	6,860	3,244	0.2	34.2	
Canada	47,829	48,006	2,305	556	50,867	22,571	1.2	6.4	
Chile	2,973	3,873	72	24	3,969	2,005	0.1	33.5	
Colombia	1,497	1,731	40	32	1,803	896	0.0	20.4	
Costa Rica	245	288	9	8	305	146	0.0	24.5	
Ecuador	191	253	15	15	283	135	0.0	48.2	
Mexico	4,164	4,885	49	32	4,966	2,461	0.1	19.3	
Peru	576	621	37	19	677	338	0.0	17.5	
United States	173,076	171,000	9,373	4,591	184,964	80,219	4.4	6.9	
Uruguay	504	600	10	8	618	290	0.0	22.6	
Other Americas	3,626	1,796	171	133	2,100	991	0.0	-42.1	
Africa	5,626	5,053	565	284	5,902	2,310	0.1	4.9	
Cameroon	225	119	7	21	147	18	0.0	-34.7	
Congo	66	47	3	8	58	14	0.0	-12.1	
Ghana	149	112	8	14	134	45	0.0	-10.1	
Kenya	266	234	19	45	298	143	0.0	12.0	
Liberia	94	46	0	6	52	11	0.0	-44.7	
Nigeria	570	309	256	40	605	60	0.0	6.1	
Sudan	52	48	8	4	60	6	0.0	15.4	
South Africa	3,530	3,746	215	82	4,043	1,793	0.1	14.5	
Uganda	80	50	3	13	66	23	0.0	-17.5	
Other Africa	594	342	46	51	439	197	0.0	-26.1	
Middle East	10,715	10,457	400	182	11,039	3,641	0.3	3.0	
Egypt	219	257	58	14	329	64	0.0	50.2	
Iran	646	623	27	5	655	159	0.0	1.4	
Iraq	83	123	4	7	134	39	0.0	61.4	
Israel	7,921	7,362	274	48	7,684	3,047	0.2	-3.0	
Kuwait	712	1,089	2	30	1,121	48	0.0	57.4	
Oman	150	197	0	2	199	25	0.0	32.7	
Palestine	51	86	2	6	94	15	0.0	84.3	
Qatar	70	85	0	10	95	38	0.0	35.7	
Saudi Arabia	87	139	2	9	150	23	0.0	72.4	
United Arab Emirates	243	144	0	2	146	18	0.0	-39.9	
Yemen	156	122	8	14	144	27	0.0	-7.7	
Other Middle East	377	230	23	35	288	138	0.0	-23.6	

Remark:

- Cambodian outbound tourist departures: 871,646
- International outbound tourist departures: 4,173,597

COMPILED BY:

1. Mr. Kong Sopheareak

Director
Statistics & Tourism Information Department
Fax: +855 23 885003
E-mail: kong@mot.gov.kh

2. Mr. Horth Vanny

Chief of Tourism Statistics Office
Compile and data analysis
Tel.: +855 12 827664